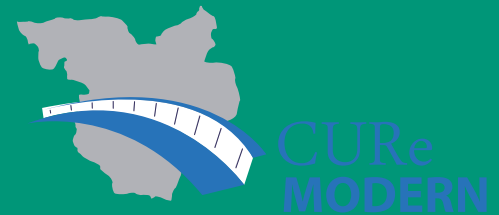


CURe MODERN

French-German infrastructure inspection,
urban and regional planning.



Jochen H. Kurz, Ralf M. Moryson
Fraunhofer IZFP, Saarbrücken, Germany

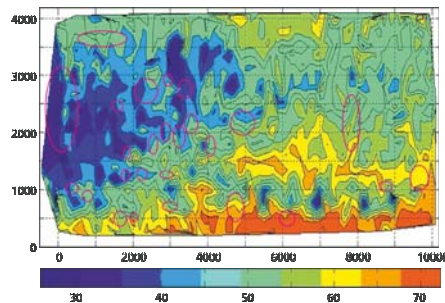
Carsten Chassard,
LfS, Neunkirchen, Germany

Davy Prybyla
Cerema, Metz, Nancy, France

Timo Wundsam, Jan-Philipp Exner
CPE, TU Kaiserslautern, Kaiserslautern, Germany



Reinforcement / Tendon Duct Localization



BetoScan for Bridge Deck Inspection

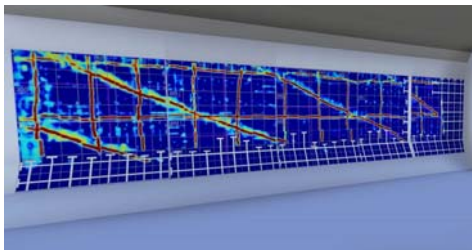


Mettnich Viaduct (CAD Modelling based on airborne data)

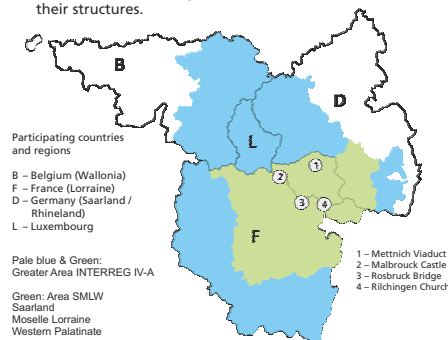
- Setting up a sustainable network of specialized partners from the regions of Saarland, Lorraine and Western Palatinate
- Introducing new and automated NDT devices for condition assessment of infrastructure constructions, asphalt roads and cultural heritage buildings in form of service inspections
- Use of methods and approaches for building up 3D condition models of selected constructions of the region
- A data base containing the results of the investigations was set up. The data base can be used with any web browser and allows owners to get an overview of the condition of their structures.



Malbrouck Castle (CAD Modelling based on airborne data)



Rosbruck Bridge (GPR for tendon duct localization)



Interreg IV-A



Project Data Base (Geo-referenced project data base)



European Regional
Development Fund

The European Union
invests in your future